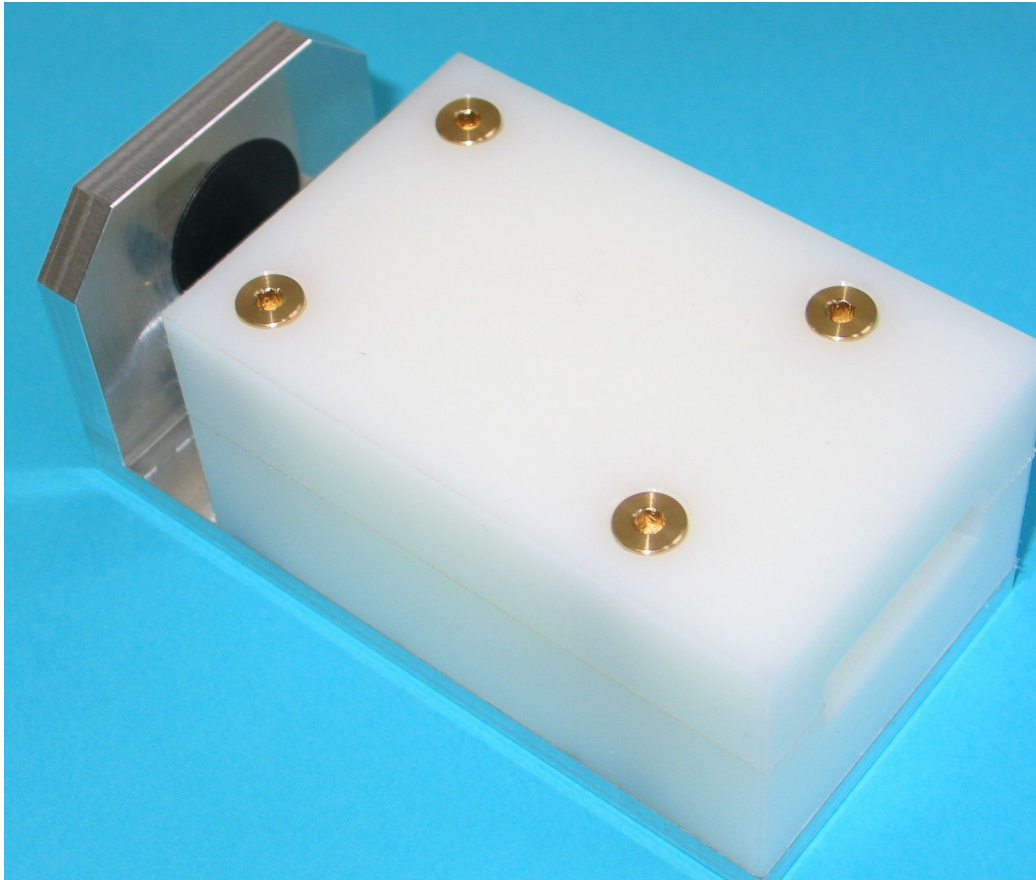


## Test Modul PE-DS3



The test module PE-DS3 can be used for testing and calibrating of our capacitive moisture meter DS3U.

### USING:

have a look to the sensor, it has to be clean and dry.

Hold the instrument into the air and switch it on.

Adjust the mentioned material setting. Prick the sensor into the test module, hold the sensor with the testmodule free into the air, read of the display value and compare it with the rated value.

Meter Type	Adjustment	Rated value	Comment:
DS3U	CODE 95	190 ±5	Use code 97for the calibration procedure

Please also have a look to the instruction in the DS3U manual!